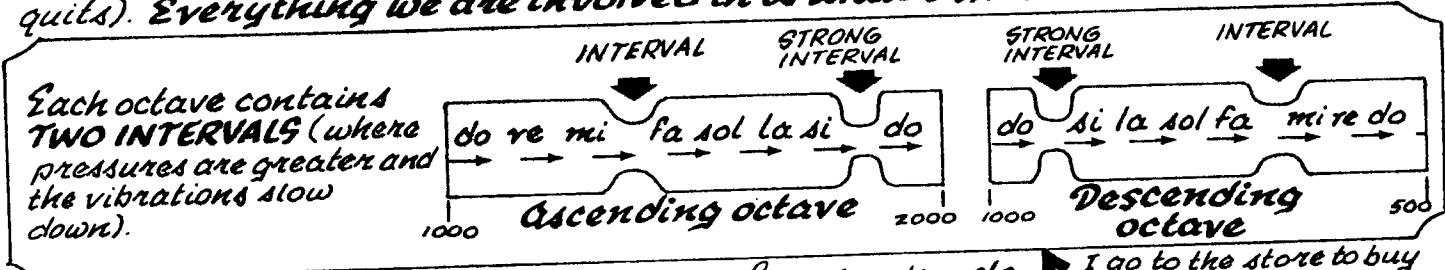


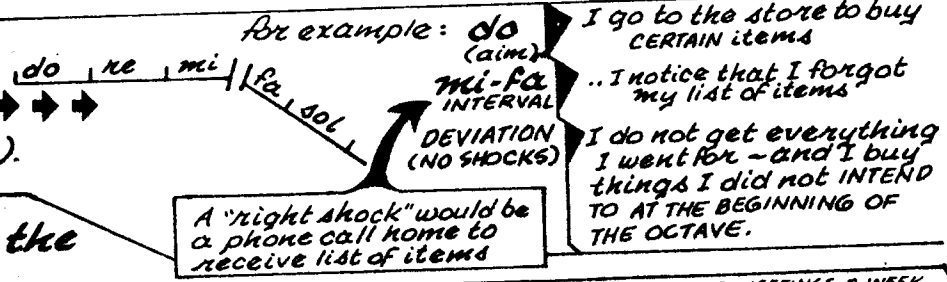
EXTRA ENCLOSURE FOR YOUR INTEREST.

Octaves

According to Ouspensky the second fundamental law of the universe is the Law of Seven or the Law of Octaves. To understand this law, "it is necessary to regard the universe as consisting of vibrations." Vibrations are CONTINUOUS and proceed in an ascending or descending rate - "so long as there continues to act the FORCE OF THE ORIGINAL IMPULSE which caused the vibration - and which overcomes the continual resistance."
 "When the resistance gains the upper hand the vibrations naturally die down and stop." (If the 'pressures' - denying forces - becomes too great, one quits). Everything we are involved in is under this law.



* If the RIGHT SHOCKS are not given at the interval points the octave will change direction (deviate).



THEORY

The INNER OCTAVES of the FELLOWSHIP...

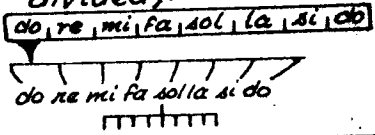
This is only one example... the LENGTH of an octave is determined by the length of the BEGINNING NOTE (DO).

IN THIS EXAMPLE, THE NOTE 'DO' IS FIGURED AT 18 MONTHS.

- ① 18-36 months
- ② 36-72 months
- ③ 72-144 months

... EACH OCTAVE IS TWICE AS LONG AS THE OCTAVE PRECEDING IT (if it is a descending octave it would be HALF as long).

The LIFETIME of the Fellowship would be one COMPLETE OCTAVE - ... but it would contain many "inner octaves" (between each note is a whole octave - and that octave is similarly divided):



- PRINCIPLES:**
- (1) Octaves MUST rise or descend in EVERY CASE.
 - (2) There are PERIODIC fluctuations (CYCLES), that is, a rising and falling, in EVERY LINE, whether ascending or descending.

WIRKS
 ① 7/4/80 LEAVE CHANNEL TO FORM
 ② To SF 1/2/80
 ③ To Adam 8/22/80
 ④ Proposed 8/1/81 Seattle.

do	Jun 1971
re	Aug 1971
mi	Oct 1971
mi-fa INTERVAL	
fa	Dec 1971
sol	Mar 1972
la	Jun 1972
si	Oct 1972
si-do INTERVAL	
do	Dec 1972
re	Apr 1973
mi	Sep 1973
mi-fa INTERVAL	
fa	Dec 1973
sol	Jun 1974
la	Dec 1974
si	Aug 1975
si-do INTERVAL	
do	Dec 1975
re	Sep 1976
mi	Jun 1977
mi-fa INTERVAL	
fa	Dec 1977
sol	Dec 1978
la	Dec 1979
si	May 1981
si-do INTERVAL	
do	Jan 1982

- DAVID, BONITA GUIDO : 151 STUDENTS / 3 MEETINGS A WEEK / ORINDA, WALNUT CREEK
- * ROBERT WORKS WITH EACH STUDENT PRIVATELY
- HAVING RELATIONSHIPS OR / MENDOCINO TRIP 11/70 CHILDREN DISCOURAGED / WORD EXERCISES BEGIN
- INTENSE 1ST & 2ND LINE WORK / SMALL GROUPS BEGIN 12/70
- * FARM OCTAVE BEGINS (JUL 4, 1971) / "STOP" EXERCISE 1/71 Berkeley meetings begin (11) / OPEN MEETINGS 11/70
- FIRST JOURNAL (9-71) / TOLD TO CUT LIFE WORK BY 20% FAST ON FARM (11-71) / BEING "OUT-OF-PATTERNS" EMPHASIZED "laughing man"
- GROWTH SLOW - DOWN / NO LEATHER OR RESTRICTIVE CLOTHING THIS TO / POOL FINING, MESSAGES
- * ROBERT LEAVES FARM (12/71) / SELL IT / NO EATING PORK
- ROBERT TEACHES 4 MEETINGS / AIRPLANE BOUGHT (1/72) WEEKLY / COIN COLLECTING
- TANOE CENTER BEGINS (5/72) / ROBERT'S FIRST MERCEDES (7/72)
- L.A. CENTER BEGINS (10/72) / ROBERT'S FIRST TRIP TO EUROPE (7/72)
- HAWAII CENTER BEGINS (11/72) / TRIP TO EUROPE (7/72) (10 DAYS) PAYMENTS: \$30 MO.
- * "Play of Crime" NOV 14, 1972 (1/4 of SCHOOL QUILTS)
- ROBERT BREAKS 16-MONTH SILENCE
- Robert: "school of literature" / AIRPLANE SOLD (4/73)
- SEATTLE CENTER STARTS (9/73) PAYMENTS: \$60 MO.
- ROBERT MOVES OUT OF CARMEL 2ND FARM OCTAVE (8/73)
- BONITA GUIDO, DANIEL DAVIS LEAVE (2/74)
- Carmel Center tapes "Psychology" 3RD LINE WORK EMPHASIZED (FARM)
- Airstream trailers - Renaissance (10/74)
- 484 MEMBERS / JAMES VINCENT (TANOE) PORCELAIN VINEYARD OCTAVE
- Poor growth period / "School of the Arts"
- * Macdonald quits (JUN, 1975)
- CONCERT OCTAVE BEGINS (9/75)
- MANY NEW CENTERS (1/76 - 6/76) • ROBERT'S CRYSTALLIZATION (3-76)
- * 1976: HIGHEST GROWTH YEAR / PAYMENTS: \$100 MO. EUROPE TRAVEL EMPHASIZED
- "ALCHEMY OCTAVE" BEGINS / JAY, CAYOL 1000 STUDENTS PAINTINGS BOUGHT (5/77)
- GROWTH RATE DECLINES FIRST EUROPE CENTER (LONDON 8/77)
- BY 80% (JULI - DEC 31, 1977)
- The "FORM", Marriages emphasized / TOWN HALL (8/77) EMPHASIZED
- * Robert stops teaching (10/78) KLOUIMAN'S QUILT 1978: 2ND LINE WORK DE-EMPHASIZED / PAINTINGS BOUGHT
- 1980 EMPHASIS: RESTRICTIONS, TASKS, FINES, OBEDIENCE
- * "Organized religion" emphasis (11/80) / PAYMENTS: \$350 MO.
- * 1980: GROWTH RATE DECLINES BY 90% (LOWEST GROWTH YEAR)

Any new emphasis (vineyard, etc.) would be a lateral Octave (they can enter at any note).